

# KOSHER RIVER CRUISE

SWITZERLAND, FRANCE & GERMANY  
OCTOBER 8-18 2026

*An exceptional itinerary that seamlessly combines iconic ports with a rich and meaningful exploration of Jewish history. Only 90 discerning guests will share this experience. Cruise aboard an ultra-luxury ship as you explore three remarkable countries, beloved destinations you know well, and intriguing places you've yet to discover. Every detail is thoughtfully curated, and the entire voyage is strictly kosher. This exclusive sailing is available by invitation only. It promises to be an unforgettable journey. We sincerely hope you will be with us.*

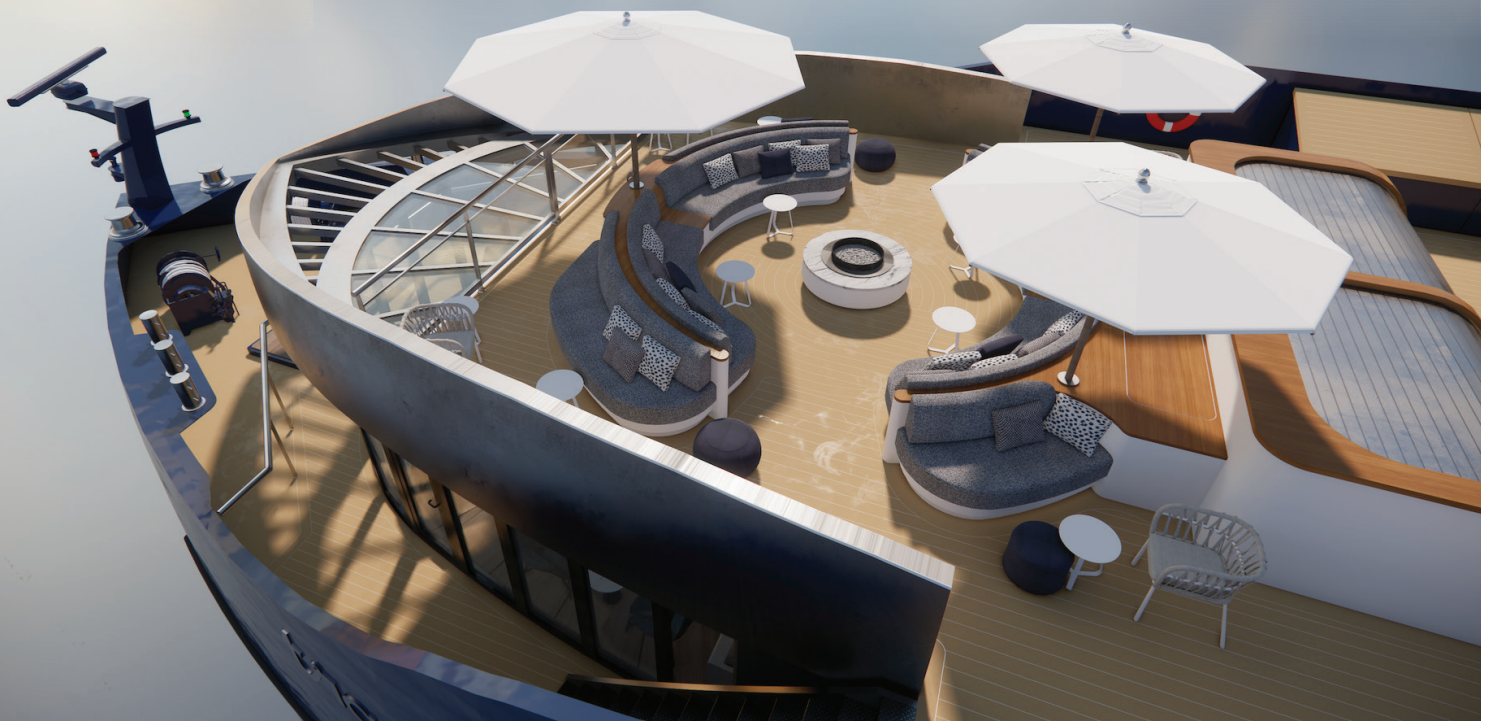


# THE BRAND NEW MAGNIFICENT TRANSCEND CONNECT SETS SAIL IN OCTOBER 2026!

This next-generation river vessel offers space, comfort, and amenities that surpass anything currently sailing Europe's rivers. This is an invitation-only charter in a fully Kosher culinary experience and includes multiple dining venues including private salons.

Developed by J Gruen Travel in partnership with leading Kosher culinary experts, this bespoke experience will combine the highest standards of Kashrut with refined, contemporary cuisine.

Paired with the elegance of Transcend Connect and the timeless beauty of the Rhine and Mosel rivers, it promises to be one of the most memorable travel experiences of your life.



# CULINARY PROGRAM



Led by the famed  
winemaker & restaurateur

## ELI GAUTHIER OF CANTINA GIULIANO

Thousands of delighted guests have enjoyed Eli's acclaimed kosher restaurant in Tuscany and his wines on their Shabbat and Yom Tov tables. For this voyage, Eli will craft a series of exceptional kosher dining experiences, inspired by the regions we visit and the rich heritage of the Jewish communities along our route elevated, creative cuisine that both satisfies and tells a story.

A Strasbourg-based French native with a decade of Tuscan winemaking expertise, Eli Gauthier of Cantina Giuliano leads a premier Kosher restaurant and catering firm delivering 5-star experiences. He specializes in curating elite food and wine tourism for discerning travelers, bridging artisanal heritage with world-class hospitality.





# TRANSCEND AMENITIES



*The Transcend Connect is  
THE PERFECT SETTING  
for this one-of-a-kind program.*

With just 45 all-veranda accommodations, the ship offers an intimate, yacht-like atmosphere paired with the sophistication of a world-class river vessel. Guests will enjoy two exquisite dining venues - the main Restaurant, serving breakfast, lunch, and meat dinners, and the elegant dairy Aft Lounge for dinners along with a beautiful main lounge, the Forum Theater, the Barista Bar, and additional inviting social spaces. Spa and Fitness facilities, a plunge pool, and massage treatments are available onboard, ensuring a truly comfortable and relaxing experience throughout the voyage.

**RELIGIOUS & EDUCATIONAL LIFE**  
*on board will be thoughtfully curated.*

We will host daily minyanim, shiurim, and a robust schedule of classes and lectures in the main lounge, the Forum Theater, and the Studio. We are honored that Rabbi and Mrs. Ken Spiro will be joining us for this sailing.

# SCHOLARS IN RESIDENCE



## RABBI KEN SPIRO

Rabbi Ken Spiro is an internationally acclaimed historian, author, and captivating lecturer who brings Jewish history to life with rare clarity, wit, and intellectual depth. He is a Senior Lecturer at Aish HaTorah, a bestselling author of *WorldPerfect*, *Crash Course in Jewish History*, *Destiny*, and the creator and resident scholar of the weekly podcast *Remember What's Next*. He is a leading voice in illuminating the unfolding story and destiny of the Jewish people.

---

## KAILA LASKY SPIRO

Kaila Lasky Spiro is a dynamic and sought-after motivational speaker and Jewish educator. She serves as Director of Partner Relations at Project Inspire and has spoken internationally for Federations, synagogues, universities, schools, and community organizations. A featured lecturer for the Speakers Bureaus of JFNA, Aish NY, and Chabad International, Kaila's presentations draw on Torah-based wisdom and real-life insight to explore personal growth, relationships, and the transformative power of Jewish observance.

*Even more impressive than our home for these 10 days is the singular itinerary created exclusively for this sailing. Conceived as a bridge between the charming, historic riverside towns and cities along the Rhine and Mosel Rivers & the storied Jewish past of Switzerland, France, and Germany, this journey offers a full spectrum of experiences.*

Your J Gruen Travel program is very inclusive – daily tours, lectures, and admissions are all included in your fare. Guests will be able to choose from cultural explorations, food and wine experiences, in-depth historical tours, interactive programs, and unforgettable photo opportunities in some of Europe’s most beautiful and meaningful settings.

## YOUR CRUISE ITINERARY

DATE	PORT	ARRIVE	DEPART
THURSDAY OCTOBER 8	Basel, Switzerland	Embark	
FRIDAY OCTOBER 9	Basel, Switzerland		
SHABBAT OCTOBER 10	Basel, Switzerland	8:30 PM	
SUNDAY OCTOBER 11	Strasbourg, France	12:30 PM	11:00 PM
MONDAY OCTOBER 12	Speyer/Worms, Germany Mainz, Germany	8.00 AM 6.00 PM	11:00 AM
TUESDAY OCTOBER 13	Mainz, Germany/Frankfurt, Germany Loreley scenic sailing	2:00 PM	
WEDNESDAY OCTOBER 14	Cochem/Trier, Germany	7:00 AM	9:00 PM
THURSDAY OCTOBER 15	Koblenz, Germany	6.00 AM	10:00 PM
FRIDAY OCTOBER 16	Cologne, Germany	6.00 AM	
SHABBAT OCTOBER 17	Cologne, Germany		
SUNDAY OCTOBER 18	Cologne, Germany	Disembark	

*Please note: Itinerary is not guaranteed, subject to weather and/or other requirements.*

# YOUR CRUISE ITINERARY



## THURSDAY, OCTOBER 8 – ZURICH & BASEL, SWITZERLAND –

You arrive in Zurich this morning. After Shacharit and a light breakfast at the historic Löwenstrasse Synagogue, enjoy a short city tour and views of Lake Zurich before continuing to Basel, our home for the next several days. Upon embarkation, settle into your stateroom or suite, attend the Captain's welcome cocktail party, and begin an exceptional culinary journey. This evening features a lecture on the history of Swiss Jewry, followed by a special welcome reception and gala dinner.

## FRIDAY – BASEL, SWITZERLAND –

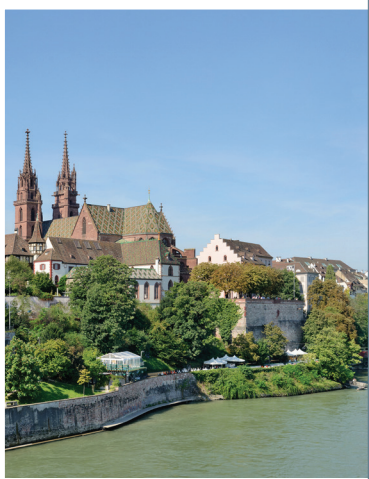
A day of exploration in the spiritual birthplace of Zionism, launched in 1897 by Theodor Herzl at the Stadtcasino Basel during the First Zionist Congress. We explore this historic city before returning to the ship to prepare for a meaningful and delicious Shabbos onboard.

## SHABBAT – BASEL, SWITZERLAND –

Join a walking group to the historic Israelitische Gemeinde Basel Synagogue (IGB) to daven with the community and enjoy a hosted Kiddush. Return to the ship for a lavish lunch accompanied by a community speaker. An afternoon walking tour follows, and we set sail after Havdalah.

## SUNDAY – STRASBOURG, FRANCE –

Early this morning, we sail the Rhine en route to Strasbourg, home to culinary star Eli Gauthier of Cantina Giuliana. After breakfast and a presentation on the history of the Strasbourg and Alsatian Jewish communities, we arrive at lunchtime for a full day of culinary and historical exploration. We sail overnight toward the renowned SHU" M towns (Speyer, Worms, Mainz,) that shaped German Jewry and Torah scholarship for generations.



**MONDAY**  
– SPEYER , WORMS & MAINZ,  
GERMANY –

After Shacharit and breakfast, we begin in Speyer with a visit to the SchPIRA Museum, the medieval Mikvah site, and the new synagogue. A special visit to the Technik Museum Speyer follows. By luxury coach we continue to Worms to see the restored Rashi Synagogue and the oldest intact Jewish cemetery in Europe. The ship meets us in Mainz, the last of the three SHU”M towns. Back onboard, enjoy dinner and an evening lecture — or opt to join a lively pub crawl to sample the excellent local beers



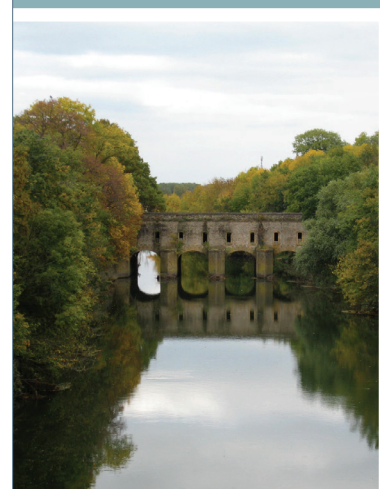
**TUESDAY**  
– MAINZ, GERMANY –

A morning in Mainz, the last of the famed SHU”M towns, exploring its rich Jewish past and present. We then drive to Frankfurt to visit one of Europe’s oldest intact Jewish cemeteries, including the graves of Rabbi Samson Rafael Hirsch and Mair Amschel Rothschild. A docent- led tour of the Jewish Museum Frankfurt, located in the Rothschild Palais, follows. After lunch, we depart at 2:00 PM to sail through the breathtaking Rhine Gorge and the legendary Lorelei, passing picturesque villages and castles. Dinner onboard includes a presentation by the Museum’s director.

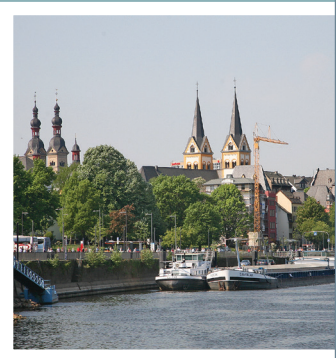


**WEDNESDAY**  
– COCHEM & TRIER, GERMANY –

We cruise along the confluence of the Rhine and Moselle rivers, passing through locks en route to Cochem. Excursion options include the famed Nürburgring driving circuit\*, a relaxing thermal spa visit\*, or a tour of medieval Trier and its fascinating Jewish history. Back onboard, enjoy a special wine pairing dinner.



*\* Additional cost; advance reservation required.*



**THURSDAY**  
– KOBLENZ, GERMANY –

Overnight we return up the Moselle to dock in picturesque Koblenz, at the meeting point of the Rhine and Moselle. Today's included tours highlight Jewish history, the charming Old Town, and panoramic views via cable car.



**FRIDAY**  
– COLOGNE, GERMANY –

We arrive in elegant Cologne, docked centrally for a two-night stay. A deep dive into Jewish heritage includes the soon-to-open MiQua Jewish Museum and meetings with community representatives. Enjoy time to shop along Schildergasse before welcoming Shabbat onboard.

**SHABBAT**  
– COLOGNE, GERMANY –

From our prime location, walk to the beautiful Roonstraße Synagogue for tefilla or join the onboard minyan. After a sumptuous Shabbat meal featuring local specialties, enjoy a lecture and guided walking tour. Shabbat concludes at 7:25 PM, followed by a cocktail reception and Farewell Dinner.

**SUNDAY**  
DEPARTURE FROM  
– COLOGNE, GERMANY –

Following early Shacharit and breakfast, we disembark the Transcend Connect and transfer to the airport for flights home.



# A UNIQUE RIVER CRUISE

5 EXCEPTIONAL ACTIVE EXPERIENCE OPTIONS

Switzerland · France · Germany | Hiking & Cycling Add-Ons for All Ages

History · food · adventure

Different paces, one trip

Multi-generational

Active option for all ages

Coordinated by Roselyn & Akiva Feinsod, Rose & Co. — Active Adventures

## SIGN UP FOR THESE DEDICATED ACTIVE OPTIONS



BASEL

### 3-Country Vineyard Ride

Cross-border cycle through Switzerland, France & Germany along Alsace vineyards at peak harvest — city to postcard villages in one easy outing.

~35 km · Easy-Moderate · Bike



SPEYER → WORMS

### Rhine One-Way

Cycle 40-45 km of flat, paved, stress-free path following the Rhine north. 2-3 hrs riding, 3.5-4 hrs with stops — one of the easiest navigation rides in Europe.

40-45 km · Easy · Bike



COCHEM

### Calmont Klettersteig Via Ferrata

Bucket-list hike on Europe's steepest vineyard slopes. Ladders, cables & cliffside traverses with stunning Moselle views.

2-3 hrs · Moderate-Challenging · Hike



BOPPARD

### Vierseenblick & Sesselbahn

Famous Rhine viewpoint where the river bends look like four separate lakes from above. Easy-to-moderate hike with optional chairlift up.

1.5-2 hrs · Easy-Moderate · Hike + Chairlift



KÖNIGSWINTER

### Drachenfels Hike & Cog Railway

Hilltop castle ruins and sweeping Rhine views in the Siebengebirge. Hike up, or ride the historic 1883 cog railway and walk down.

1.5-2.5 hrs · Moderate · Hike or Rail

**Book today!**

Limited availability, by invitation only

*Cruising with J Gruen Travel  
is an inclusive experience.*

## YOUR FARE INCLUDES:

### RESTAURANTS

#### THE RESTAURANT (B/L/D)

*Fine dining in an elegant, open-seating dining room  
(meat dinners)*

#### THE AFT LOUNGE (D)

*Small plate regional dairy dinners.*

#### DINING SALONS (L/D)

*Enjoy an intimate dining experience for up to ten  
(no charge; reservations required)*

**PASSED PLATES** *Variety of canapes on offer in the  
Lounge every evening*

#### BARISTA BAR

*Specialty coffees, light fare, and delicious desserts  
on demand*

**ROOM SERVICE** *Choose from a varied menu anytime*

---

*All dining options are Kosher and complimentary,  
as are fine wines selected by our sommeliers.*

*Cocktails, wines and all other beverages  
are complimentary everywhere onboard.*

---

**AFTERNOON TEA**, daily canapés and hors d' oeuvres.  
Open premium bar in all bars, lounges and restaurants.

**UNLIMITED SPECIALTY COFFEES**, as well as soft  
drinks, juices and bottled waters in our Barista Lounge  
and at self service locations.

**WELCOME BOTTLE OF WINE** in your stateroom or suite.

**IN-ROOM BAR SET-UP** with soft drinks, bottled waters,  
beers, and Nespresso machine.

**FRESH FRUIT** in all accommodations.

**UNLIMITED WIRELESS (Wi-Fi)** for all guests.

**TWICE DAILY STEWARDESS SERVICE**  
and turndown service.





## ACCOMMODATIONS INCLUDE:

**FRENCH BALCONY WINDOWS.**

**LUXURIOUS CUSTOM-BUILT MATTRESS,** fine cotton linens, a choice of firm or soft pillows.

**AMPLE STORAGE** in our signature glass wardrobes, with plush terry robes, slippers and a personal safe.

**AN IN-SUITE BAR** with a selection of beverages.

**INTERACTIVE ENTERTAINMENT** with broadcast TV and hundreds of movie and music choices.

**LUXURY BATHROOM** with SmartGlass technology.

**FRESH FRUIT** replenished daily.

---

*The entire ship is Glatt Kosher and Chalav Yisrael, with all wines Mevushal.*

*A dedicated team of chef/mashgichim supervises the kashrut, and a Sefer Torah will be onboard for minyanim.*

---

## SUITE AMENITIES

**ALL STANDARD AMENITIES,** plus a private living room with a second HDTV, a fresh floral arrangement, binoculars, and in-room Technogym Case equipment upon request.

**HIS & HERS** dual bathrooms

**A SUITE HOSTESS** to ensure everything in your suite is always as you wish.

## ACCOMMODATION & PRICING

*We are pleased to share the cabin options and current pricing for our upcoming riverboat journey. This sailing features spacious, well-appointed accommodations, refined onboard service, and an intimate atmosphere ideal for relaxed river cruising.*

ALL PRICING IN USD, PER PERSON, BASED ON DOUBLE OCCUPANCY.

CATEGORY	CABIN TYPE	SIZE	PRICE (PP)
<b>B</b>	Cabin	210 SQ FT	\$8,250
<b>A</b>	Cabin	210 SQ FT	\$9,250
<b>S2</b>	Suite	420 SQ FT	\$13,250
<b>S1</b>	Suite	420 SQ FT	\$14,250

Gratuities included; No additional fees or taxes.

Spa treatments, items of a personal nature, and optional tours / private transfers are not included.

